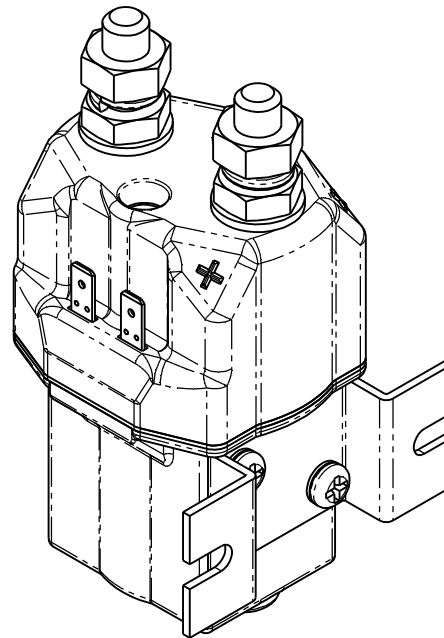
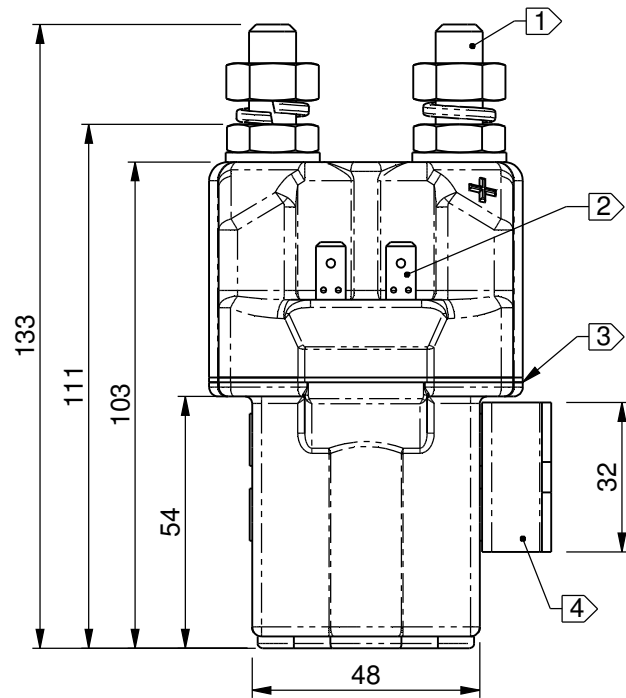


ELECTRICAL SCHEMATIC



- ① M10 MAIN TERMINALS TO BE TIGHTENED WITHIN RANGE 13.4 - 14.6Nm
- ② 6.3mm SPADE TERMINALS FOR COIL CONNECTIONS
- ③ SILICONE FOAM GASKET FITTED HERE
- ④ MOUNTING BRACKET FITTED HERE
- ② ⑤ SWITCH IDENTITY LABEL FITTED HERE

						MATERIAL	SCALE	DESCRIPTION		
						SEE INDIVIDUAL PARTS	N.T.S. (DO NOT SCALE DRG.)	OUTLINE		
DATE	ISSUE	DESCRIPTION OF CHANGE	CNR No.	D'WN. BY	CK'D BY	APP'D BY	FINISH	TYPE	SHEET	DRAWING No.
12.09.11	2	SWITCH ID LABEL ADDED	CNR 4775	RR	POC	PJD	SEE INDIVIDUAL PARTS	SU280P	1 OF 1	2156-155
07.03.07	1	1st ISSUE	NDR 0046	RR	LB	LB	SEE INDIVIDUAL PARTS			



ALL BURRS AND SHARP EDGES MUST BE REMOVED
ALL DIMENSIONS IN mm - **IF IN DOUBT ASK**



GENERAL TOLERANCE, UNLESS OTHERWISE STATED :

- CONCENTRIC DIAMETERS TO HAVE MAXIMUM T.I.R. OF 0.25mm
- METRIC THREADS TO BS 3643 - INTERNAL 6H, EXTERNAL 6g
- ALL RADII IN CORNERS TO BE 0.2mm MAX.
- TURNED FINISHES TO BE N7 OR BETTER
- ANGULAR TOLERANCE: +/-1°
- HOLES TO BS 4500 H11

X = +/-1.0
X.X = +/-0.2
X.XX = +/-0.08